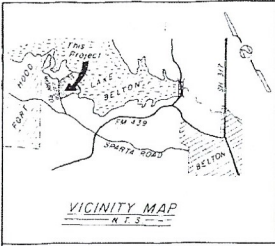


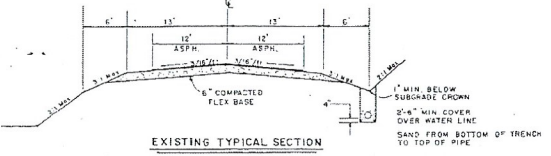
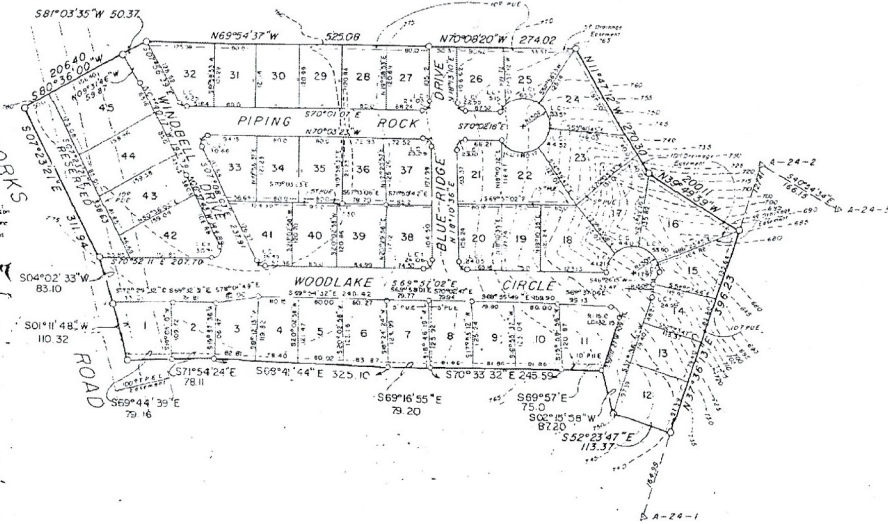
A/368 C

A/368 C



PROPERTY DEVELOPMENT

LOT NO.	ACRES	OWNER	DATE
1	1.13	WOODLAKE DEVELOPMENT	1/1/11
2	1.13	WOODLAKE DEVELOPMENT	1/1/11
3	1.13	PHILLIPS, E. MARY ANN	1/1/11
4	1.13	WOODLAKE DEVELOPMENT	1/1/11
5	1.13	WOODLAKE DEVELOPMENT	1/1/11
6	1.13	WOODLAKE DEVELOPMENT	1/1/11
7	1.13	VINCENT, J. & JENNIFER	1/1/11
8	1.13	WELLS, JAMES EARL	1/1/11
9	1.13	CHAFF, E. MARY	1/1/11
10	1.13	WOODLAKE DEVELOPMENT	1/1/11
11	1.13	WOODLAKE DEVELOPMENT	1/1/11
12	1.13	WOODLAKE DEVELOPMENT	1/1/11
13	1.13	WOODLAKE DEVELOPMENT	1/1/11
14	1.13	WOODLAKE DEVELOPMENT	1/1/11
15	1.13	WOODLAKE DEVELOPMENT	1/1/11
16	1.13	WOODLAKE DEVELOPMENT	1/1/11
17	1.13	WOODLAKE DEVELOPMENT	1/1/11
18	1.13	WOODLAKE DEVELOPMENT	1/1/11
19	1.13	WOODLAKE DEVELOPMENT	1/1/11
20	1.13	WOODLAKE DEVELOPMENT	1/1/11
21	1.13	WOODLAKE DEVELOPMENT	1/1/11
22	1.13	WOODLAKE DEVELOPMENT	1/1/11
23	1.13	WOODLAKE DEVELOPMENT	1/1/11
24	1.13	WOODLAKE DEVELOPMENT	1/1/11
25	1.13	WOODLAKE DEVELOPMENT	1/1/11
26	1.13	WOODLAKE DEVELOPMENT	1/1/11
27	1.13	WOODLAKE DEVELOPMENT	1/1/11
28	1.13	WOODLAKE DEVELOPMENT	1/1/11
29	1.13	WOODLAKE DEVELOPMENT	1/1/11
30	1.13	WOODLAKE DEVELOPMENT	1/1/11
31	1.13	WOODLAKE DEVELOPMENT	1/1/11
32	1.13	WOODLAKE DEVELOPMENT	1/1/11
33	1.13	WOODLAKE DEVELOPMENT	1/1/11
34	1.13	WOODLAKE DEVELOPMENT	1/1/11
35	1.13	WOODLAKE DEVELOPMENT	1/1/11
36	1.13	WOODLAKE DEVELOPMENT	1/1/11
37	1.13	WOODLAKE DEVELOPMENT	1/1/11
38	1.13	WOODLAKE DEVELOPMENT	1/1/11
39	1.13	WOODLAKE DEVELOPMENT	1/1/11
40	1.13	WOODLAKE DEVELOPMENT	1/1/11
41	1.13	WOODLAKE DEVELOPMENT	1/1/11
42	1.13	WOODLAKE DEVELOPMENT	1/1/11
43	1.13	WOODLAKE DEVELOPMENT	1/1/11
44	1.13	WOODLAKE DEVELOPMENT	1/1/11
45	1.13	WOODLAKE DEVELOPMENT	1/1/11



STATE OF TEXAS
COUNTY OF BELL

KNOW ALL MEN BY THESE PRESENTS,
THAT I, CARL E. PEARSON, REGISTERED PROFESSIONAL ENGINEER, DO HEREBY CERTIFY THAT I PREPARED THIS PLAN FROM AN ACTUAL AND ACCURATE SURVEY OF THE LAND AND THAT THE CORNER MONUMENTS SHOWN THEREON WERE PROPERLY PLACED UNDER MY PERSONAL SUPERVISION OF CONFORMANCE WITH THE BELL COUNTY SUBDIVISION REGULATIONS.

IN WITNESS WHEREOF, MY HAND AND SEAL, THIS THE 16TH DAY OF OCTOBER 2016

Carl E. Pearson

KNOW ALL MEN BY THESE PRESENTS,
THAT B. CARL E. PEARSON, REGISTERED PROFESSIONAL ENGINEER, DO HEREBY CERTIFY THAT I PREPARED ALL UTILITY CALCULATIONS AND DESIGNED ALL WORKING AND EXHIBITS IN ACCORDANCE WITH THE BELL COUNTY SUBDIVISION REGULATIONS.

IN WITNESS WHEREOF, MY HAND AND SEAL, THIS THE 16TH DAY OF OCTOBER 2016

B. Carl E. Pearson

I HEREBY CERTIFY THIS PLAN WAS APPROVED THIS _____ DAY OF _____ BY THE BELL COUNTY COMMISSIONERS COURT AND MAY BE FILED FOR RECORD IN THE DEED RECORDS OF BELL COUNTY, TEXAS BY THE COUNTY CLERK.

COUNTY JUDGE _____

WITNESS MY HAND THIS THE _____ DAY OF _____

NOTARY PUBLIC _____

I HEREBY CERTIFY THIS PLAN WAS APPROVED THIS _____ DAY OF _____ BY THE BELL COUNTY COMMISSIONERS COURT AND MAY BE FILED FOR RECORD IN THE DEED RECORDS OF BELL COUNTY, TEXAS BY THE COUNTY CLERK.

COUNTY JUDGE _____

WITNESS MY HAND THIS THE _____ DAY OF _____

NOTARY PUBLIC _____

REPLAT & CORRECTION PLAT		
WOODLAKE, SECTION ONE		
LOTS 1 THRU 45		
A SUBDIVISION OF THE HERBERT TOLBERT SUB, ABS 328		
BELL COUNTY, TEXAS		
WOODLAKE DEVELOPMENT		
TEMPLE CIVIL ENGINEERING		
10-16-84	1" = 100'	D-540

Education, Vol. 2016, Page 585